

# **CITIZENS' BOND OVERSIGHT COMMITTEE**

## **2006 BOND UPDATE PRESENTATION MEASURE R**

Rowland Unified School District

February 4, 2014



# Program Update: AGENDA

**A. Program Update**

**B. Financial Report**

**c. Project Expenditure Report**



# A. Program Update Scope

## Rowland High School



New Science Classroom



New Science Staff Workroom



## A. Program Update Scope (Cont.)

### Rowland High School



Classroom Building Demo



New Classroom HVAC Duct Work & Drywall

# A. Program Update

## Scope (Cont.)

### Nogales High School Revival



Building Demo



Site Demo

# A. Program Update Scope (Cont.)

## Nogales High School Revival



Site Excavation



New Utilities Trenching (Shoring per OSHA)

# A. Program Update Schedule

## Projects (since Summer 2009)

PHASE 1 (2009)	PHASE 2 (2010)	PHASE 3 (2011)	PHASE 4 (2012)			PHASE 5 (2013)	PHASE 6 (2013- 14)	PHASE 7 (2014-15)
			Winter/Spring	Summer	Fall			
<i>NHS - Autoshop</i>	<i>Blandford ES</i>	<i>Telesis - Phase 1</i>	<i>Yorbita ES*</i>	Rowland HS			ES Kindergarten Modernizations	
<i>NHS - Utilities</i>	<i>RHS - Culinary</i>	<i>Villacorta ES*</i>	<i>Killian ES**</i>	<i>Rorimer ES*</i>		<i>Rowland ES**</i>	NHS Revival	
<i>Ybarra Academy</i>	<i>Hurley ES</i>	<i>Northam ES*</i>	<i>Telesis - Phase 2</i>	<i>Shelyn ES**</i>			Santana HS	
	<i>Giano IS</i>	<i>Jellick ES**</i>		<i>Hollingworth ES</i>			La Seda ES	
	<i>Jellick - Portables</i>	<i>Alvarado IS</i>		<i>Giano IS Asphalt/Concrete Repair</i>			Fajardo ES	
	<i>NHS - Portables</i>	<i>Oswalt Academy</i>	"Beautification" Projects (e.g. Exterior Paint)					
		<i>Nogales HS</i>	"Legacy" Projects (e.g. Mechanical ductwork replacement)					

### Notes:

- Bold** = Under Construction
- Bold Italics** = Completed
- [School Name]\* = Relocate to La Seda ES during construction
- [School Name]\*\* = Relocate to Farjardo ES during construction
- Nogales HS = Multiple Projects (Modernization, Library, CTE: Business)
- Rowland HS = Multiple Projects (Modernization, CTE: Business)
- [School Name]\*\*\* = ES Kindergarten, DSA approval rec'd on \_\_\_\_\_
- Santana HS use in review

# A. Program Update

## Project Status Report – 1/15/2013

Project Name	Status	Bids Due	Award Date	Construction Dates	Committed/ Est. Cost at Completion*
<b>Rowland High School / CTE Business</b>					
Partial Modernization	75%		6/12/2012	6/2012 – 3/2014	\$8,308,532/ \$8,506,322
<b>Rowland ES</b>					
Partial Modernization	Complete		12/4/2012	12/2012 – 7/2013	<b><i>\$3,114,963</i></b>
<b>Nogales HS Revival and Box Culvert</b>					
Partial Modernization	5%		11/12/2013	11/2013 – 12/2015	\$24,560,517/ \$11,384,000 ***
<b>Kindergarten Projects</b>					
Multiple Sites (12)	DSA Review	Phased		4/2014 – 4/2015	\$6,500,000**

**Notes:**

- \* = Main Contractor Construction Commitments / Commitments with Pending Change Orders
- \*\* = Construction Cost Estimate
- \*\*\* = 2006 Measure R Bond Allocation; remaining funds from 2012 Measure R Bond.
- Bold Italics** = Project Complete No Significant Additional Costs Anticipated





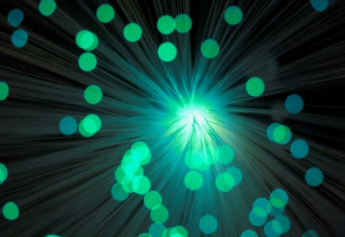
## B. Financial Report Budget

### Project Funding Sources

Sources	Amount
Measure R 2006 Bond	\$ 117,980,000
Interest Funds	\$ 6,284,059
Revenue Sources – Partial State Funds	\$ 22,273,682
Other District Sources	\$ 2,359,493
Federal Stimulus Funds	Included in Bond
<b>Available Revenue:</b>	<b>\$ 149,286,487</b>
Revenue Sources – Remaining State Funds*	\$ 351,771
<b>Total Revenue:</b>	<b>\$ 149,638,258</b>

**Notes:**

1. \* = Fajardo Elementary School.



## C. Project Expenditures and Report: 01/15/2014

### For the Period Ended January 15<sup>th</sup> 2014

BEGINNING FUND BALANCE: JULY 1, 2013	\$ 49,944,115
<b>REVENUE</b>	
Interest – July 2013 to January 15, 2014	\$ 81,258
LESS: EXPENDITURES PAID (Total All)	
July 1, 2013 to January 15 <sup>th</sup> , 2014	<u>\$ 4,738,810</u>
<b>FUND BALANCE AS OF January 15, 2014</b>	
<b>MEASURE R 2006</b>	<b>\$ 45,286,563</b>

# C. Project Expenditures and Report: 01/15/2014

	<b>Expenditures paid - July 2013 to January 2014</b>	<b>2013-14</b>	<b>2012-13</b>
90300	Stadium - Nogales, Rowland HS	0	0
90301	Library Modernization	0	52,102
90302	Playground - La Seda Elementary	0	0
90303	Cover Walkway - Rowland Elementary	0	0
90304	Multi-Purpose/Kitchen - Villacorta Elementary	0	3,642
90305	Library Renovation - Nogales High School	1,458	1,814,053
90307	Curb Appeal/Fencing	0	0
90308	K-8 Conversion - Ybarra/Oswalt El.Schools/Rincon	0	28,452
90309	Career Tech - Nogales/Rowland High Schools: Auto/Cul.	0	2,600
90310	New Construction - Oswalt Academy	8,773	3,275,095
90312	Kindergarten Mod	7,005	217,707
90313	NHS Revival Mod	678,071	538,595
90319	Career Tech - Nogales/Rowland High Schools: Business	100,066	0
90400	Modernization	3,726,187	17,351,631
90200	Program Management	217,250	521,400
	<b>TOTALS</b>	<b>4,738,810</b>	<b>23,805,277</b>
	Fund 35.0 (State Matching Funds – C.T.E.) &(Modernization)	0	9,682,567
	Trailers Paid by Fund 25.0 (Developer Fees)	0	87,114

**Questions?**

# Citizens' Bond Oversight Committee Measure R 2006 – 2/4/2014

**ROWLAND**  
UNIFIED SCHOOL DISTRICT

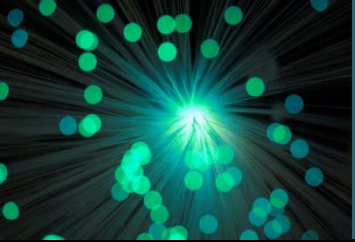


**THANK YOU**



**ERICKSON-HALL**  
PROGRAM MANAGEMENT





# **CITIZENS' BOND OVERSIGHT COMMITTEE**

## **2012 BOND UPDATE PRESENTATION MEASURE R**

Rowland Unified School District

February 4, 2014



# Program Update: AGENDA

**A. Program Update**

**B. Financial Report**

**c. Project Expenditure Report**

# A. Program Update Project List / Status

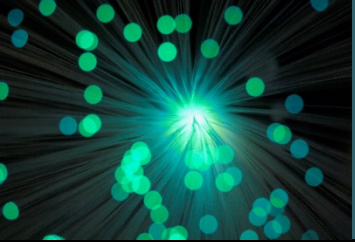
## 2012 Bond Projects

Project Name	Budgets	Status	Award	Construction Dates	Expenditures
Rowland HS Revitalization	\$25-40 Million	In Design			\$205,020
Nogales HS Revival	\$17,365,129*	In Construction	11/12/2103	11/2013 – 12/2015	\$0.00
Oswalt New Construction	\$10-30 Million				
NHS Pool Project	\$3-4 Million				
Secondary school shower/lockers	\$6 Million				
Multipurpose /office space at all elementary schools	\$15 Million				
Playground surfaces and equipment – reconstruction	\$2.5 Million				
Bleacher & seating systems	\$1.9 Million				
Technology & Infrastructure	\$4.5 Million				
Fascia reconstruction – District wide	\$850 Thousand				
Concrete/Asphalt flatwork	\$6.5 Million				
Door replacement	\$950 Thousand				
Portable / modular replacement	\$9 Million				
HVAC circulation lines	\$4.5 Million				

**Note:**

- \* = 2012 Measure R Bond Allocation; \$28,749,129 total committed; \$11,384,000 in 2006 Measure R Bond
- Project List & Budget Estimates from RUSD Web Site.





## B. Financial Report

Financial Summary: 01/31/2014

### For the Period Ended January 31<sup>st</sup> 2014

BEGINNING FUND BALANCE: JULY 1, 2013	\$50,000,000
<b>REVENUE</b>	
Interest – July 2013 to January 31, 2014	\$ 59,609
LESS: EXPENDITURES PAID (Total All)	
July 1, 2013 to January 31, 2014	<u>\$ 205,020</u>
<b>FUND BALANCE AS OF January 31, 2014</b>	
<b>MEASURE R 2012</b>	<b>\$ 49,854,589</b>





## C. Project Expenditures and Report: through 01/31/2014

Description	Committed	Expended
Site	-	-
Planning	\$1,931,013	\$189,100
Construction	-	-
Testing	\$15,920	\$15,920
Inspection	-	-
Furniture & Equipment (F&E)	-	-
<b>2012 Bond Totals</b>	<b>\$1,931,013</b>	<b>\$205,020</b>

**Questions?**

# Citizens' Bond Oversight Committee Measure R 2012 – 2/4/2014

**ROWLAND**  
UNIFIED SCHOOL DISTRICT



**THANK YOU**



**ERICKSON-HALL**  
PROGRAM MANAGEMENT

